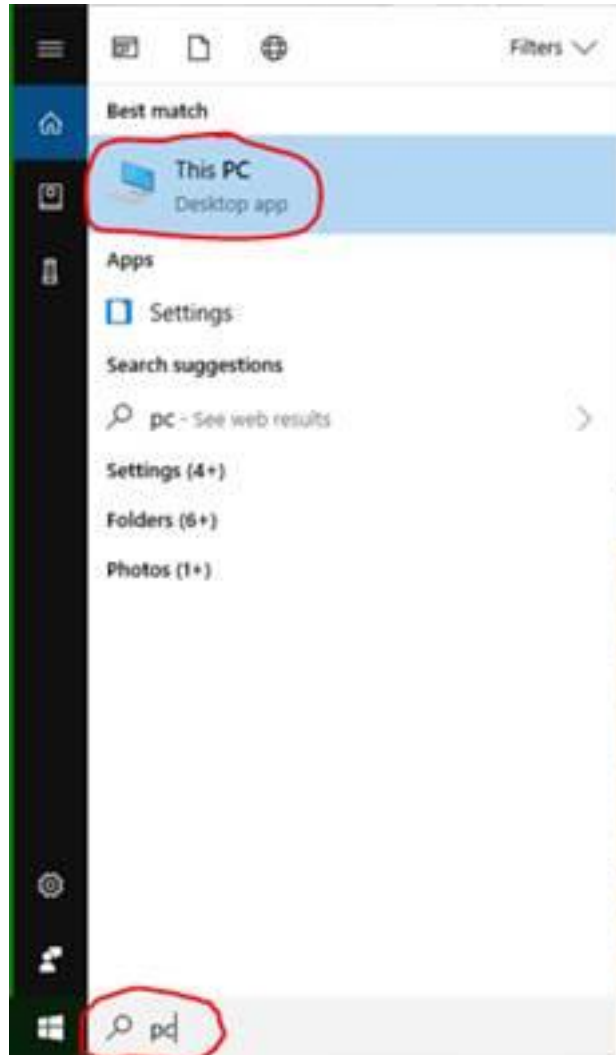


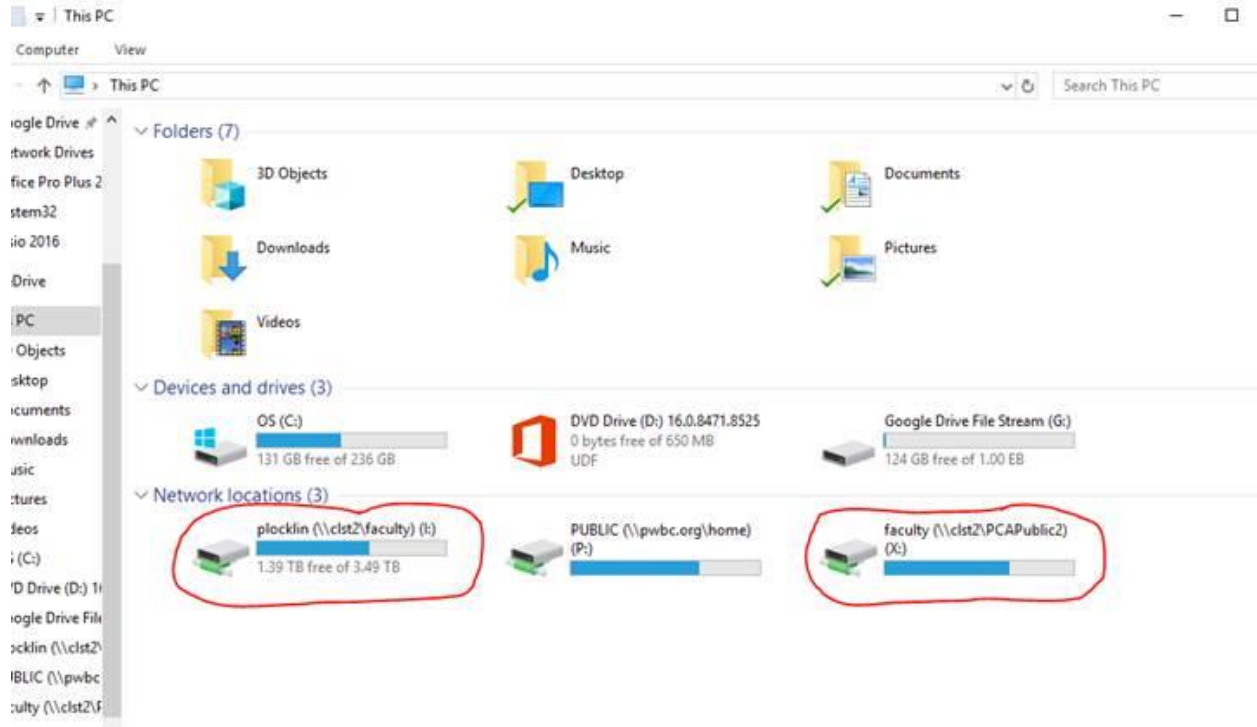
If you need help accessing the Network Drives please see the following instruction:

Finding Network Drives on a Windows Machine

Click the search bar and type PC
Then Click "This PC"



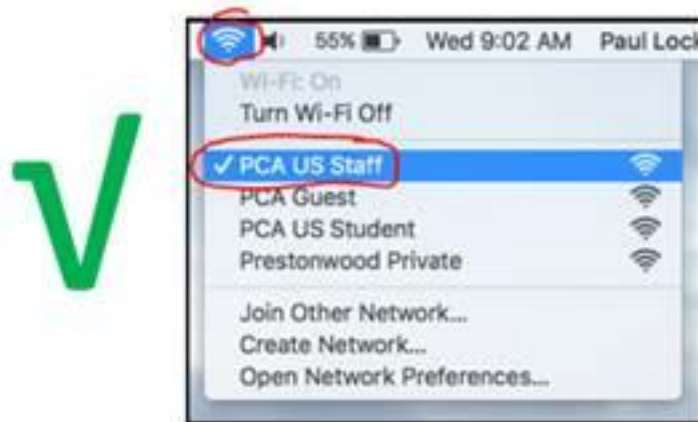
Here are your Network Drives:



Finding Network Drives - Mac Users

It is common for an Apple computer to lose network drives at PCA.
The following information will help you find them.

Before you start you must be on the Staff Wi-Fi:



|

All PCA network drives are on the "clst2" server

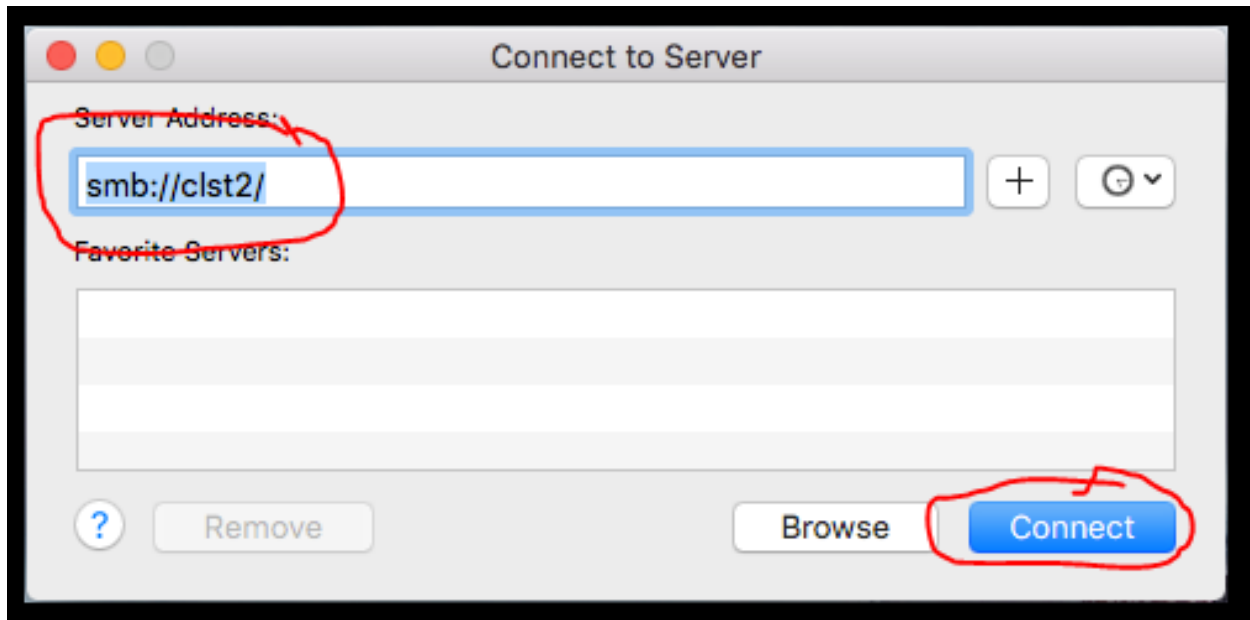
Find the clst2 server

Click "Go" and "Connect to Server"



Enter - <smb://clst2/>

Click "Connect"



You May be asked for your user name and password.
Enter your user name and password and click enter.

Enter network credentials

Enter your credentials to connect to: MacBookPro.local

Username

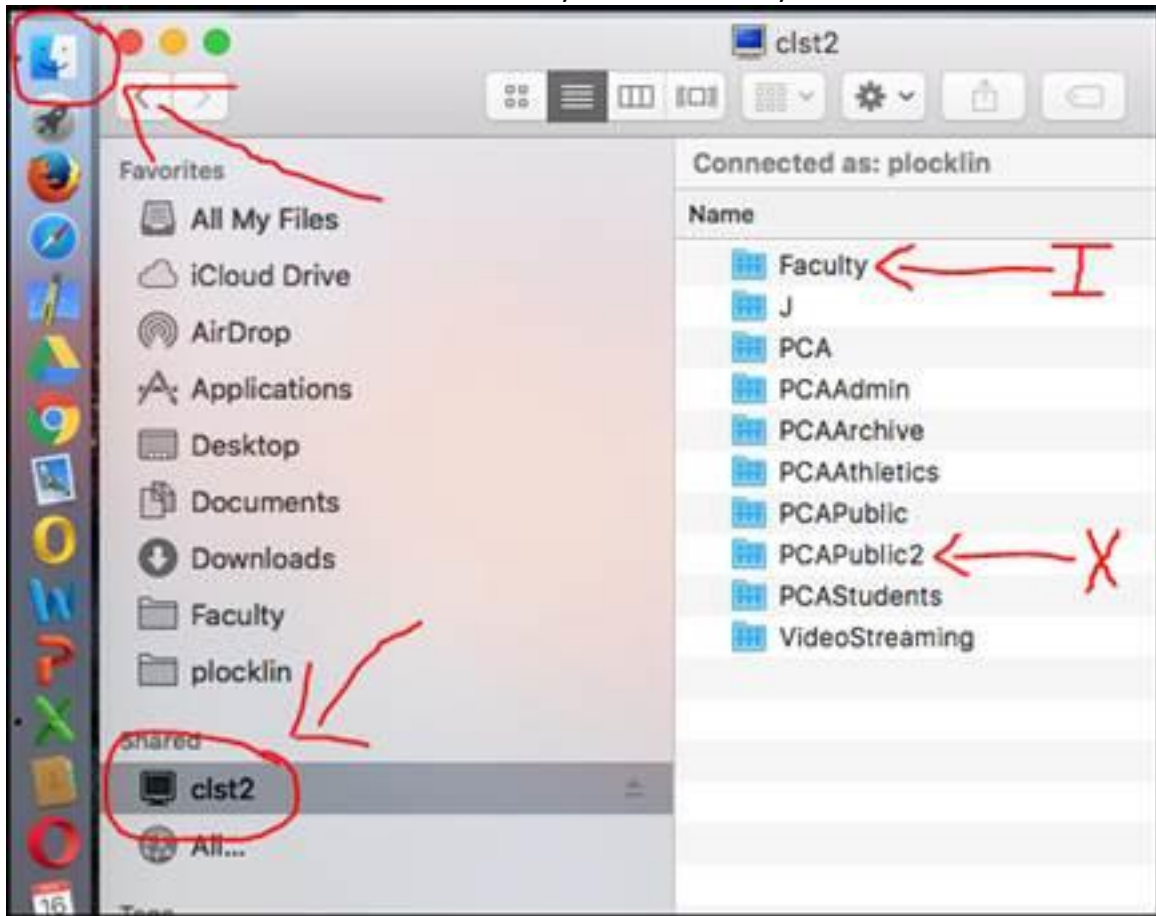
.....

Domain: WIN10-DESKTOP

Remember my credentials

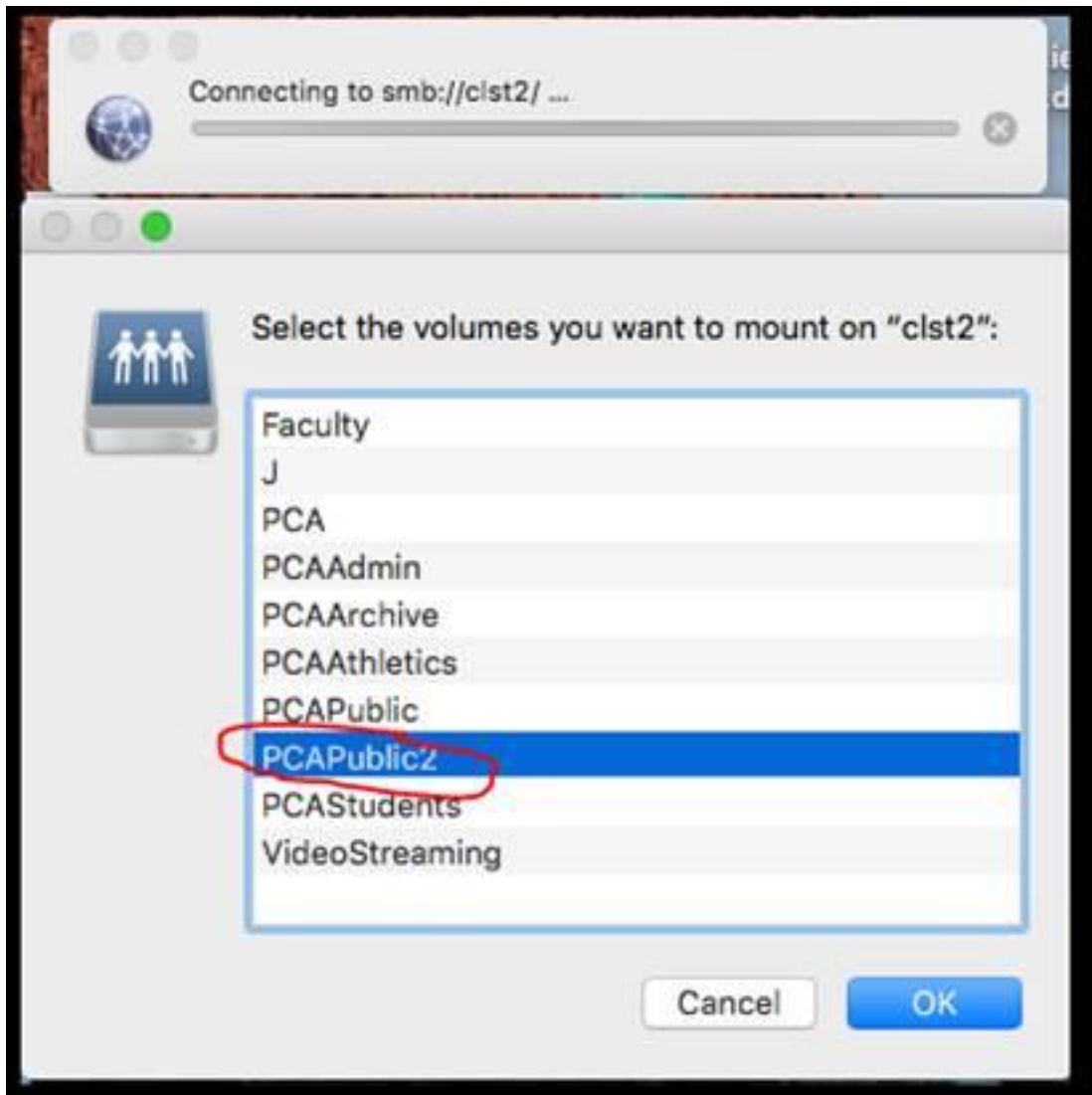
Wait for the folders to populate; this could take a minute or two.

When clst2 is connected you will see it in your Finder:



Your **I drive** is in "Faculty" and the **X drive** is in "PCAPublic2"

For the X drive: double click PCAPublic2

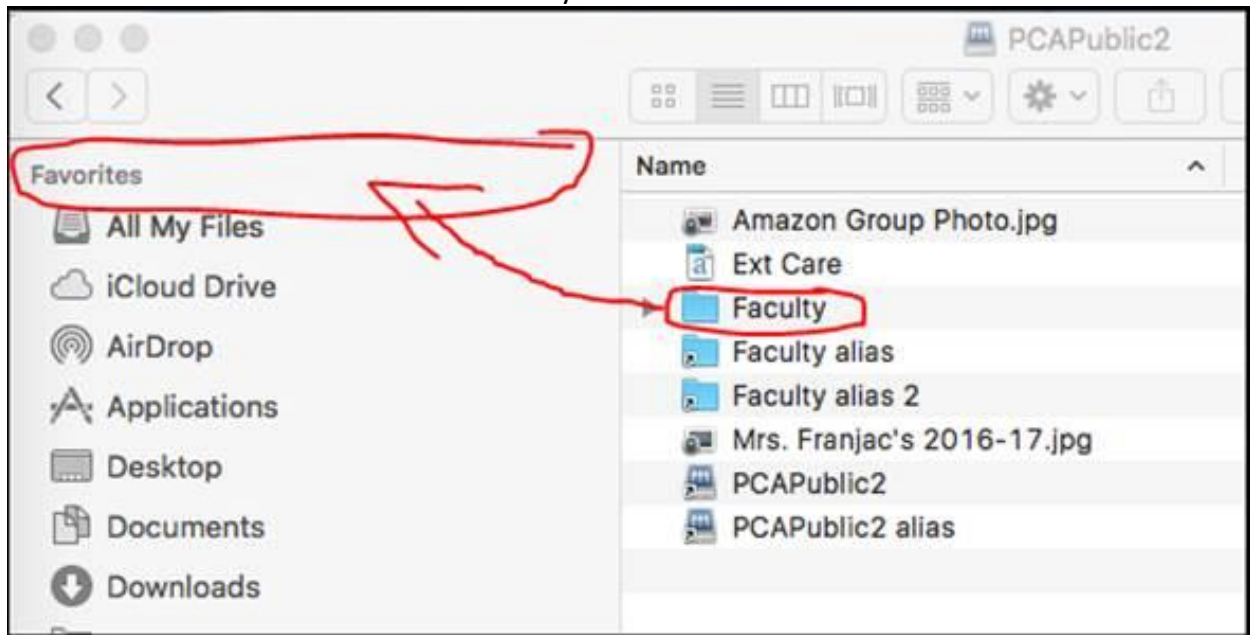


Save the X drive to Your Favorites

Open "PCAPublic2" and Drag the "Faculty" folder to "Favorites"



This Faculty folder is the X-Drive



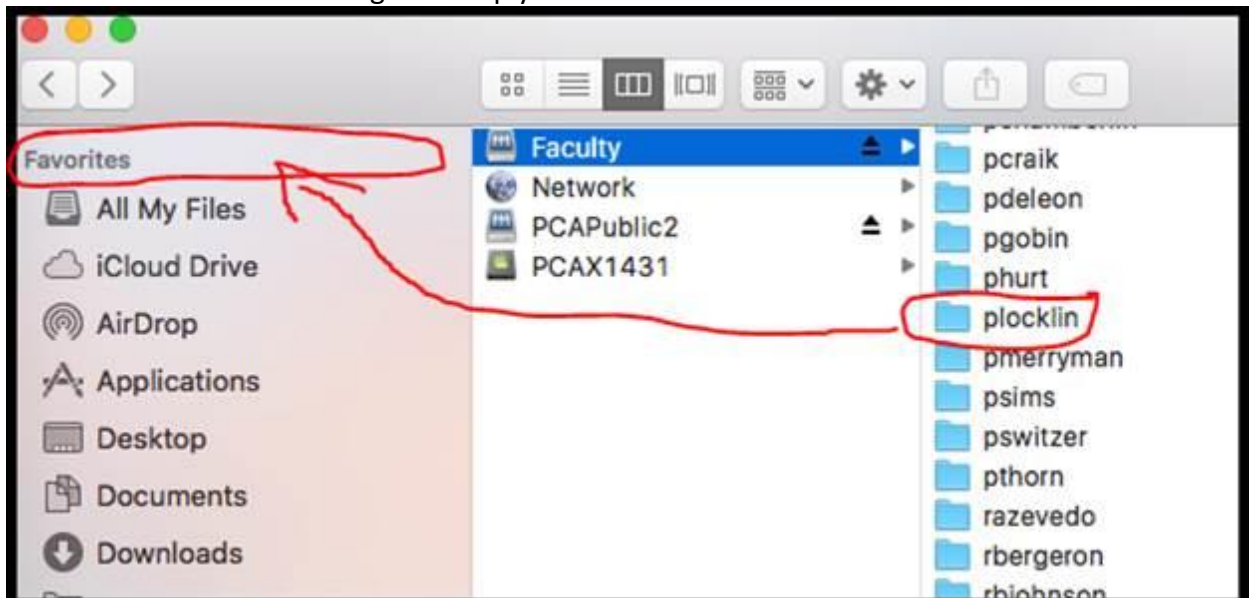
Save your I drive to Your Favorites

Open "Faculty" and find your user folder

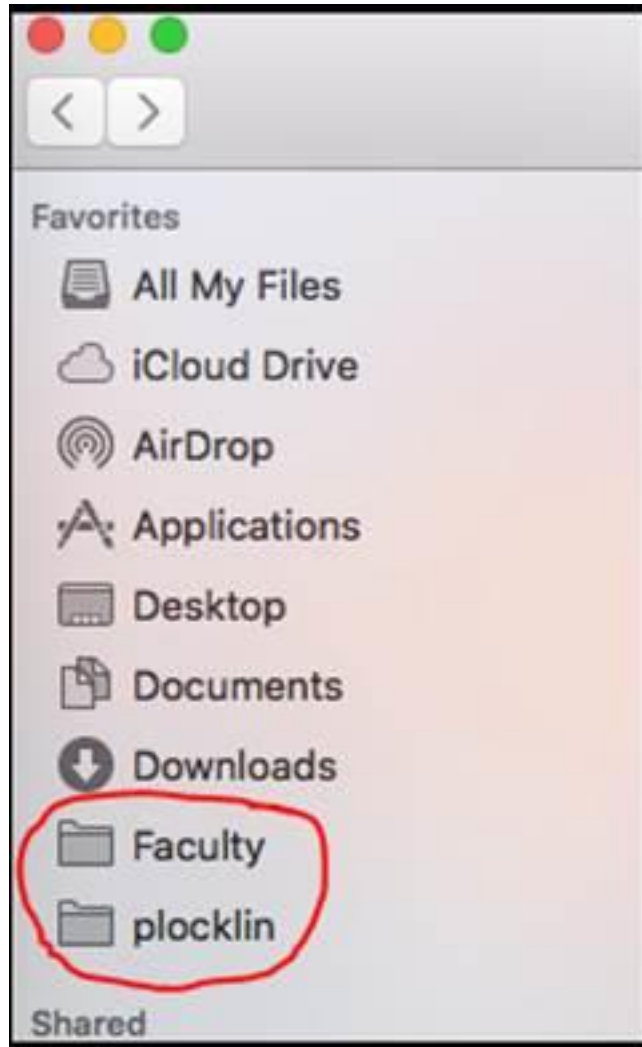
This Faculty folder contains all the I drives



Drag and drop your I drive folder to "Favorites"



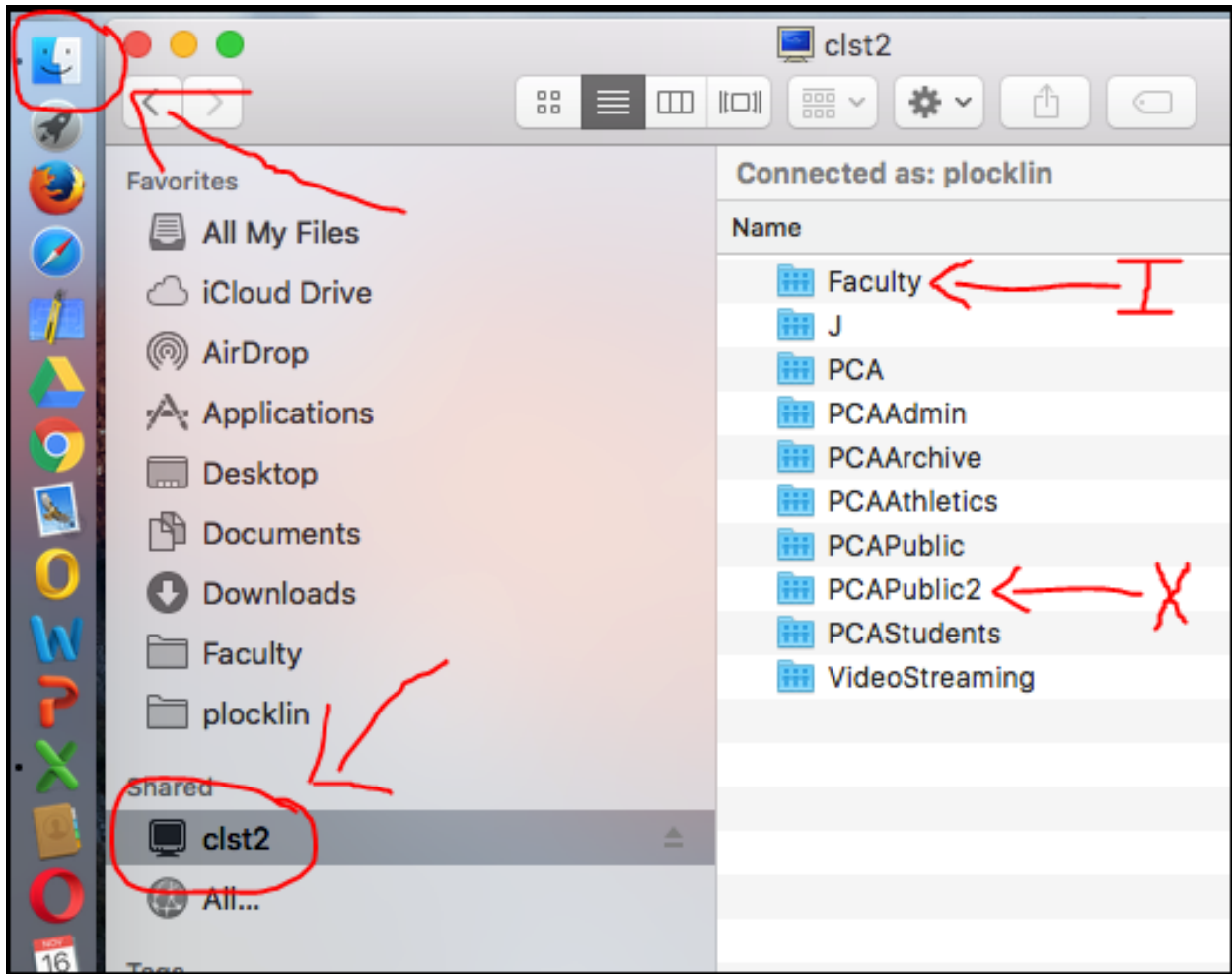
Now your network drives are in your Favorites



Clarification on Drive names

Network Drives are referred to by their "Windows" designation and have nothing to do with the actual folder name on the network.

"I drives" are personal folders located inside the main "Faculty" drive on clst2
"X drive" is a folder named "Faculty" located inside the "PCAPublic2" drive on clst2



If you have any questions please contact the PCA Helpdesk.